

Universal Position Control Unit

PS 35

9013.0196 / 03.11.2020

Included Items:

- Control unit
- USB cable 2 m long
- 3-way motor adapter cable
0.65 m long
- Acceptance certificate



The following accessories are available:

- External desktop power supply (100-240 V, 90 W)
- Connecting cable with plug for different positioning systems
- Analog joystick for 3 axes with 3 m cable
- Stand-alone compiler with USB dongle

**This short manual does not replace the user manual.
It is only an additional instruction for qualified personnel.**

You can download the complete manual and the OWISoft on the OWIS website.

Before Setup:

- Verify that all listed parts are included in the delivered package.
- Follow the safety instructions contained in the user manual.

Initial Operation

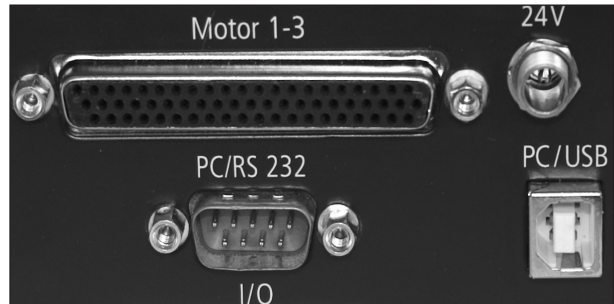
The initial operation consists of:

- ▶ **Hardware** part
- ▶ **Software** part:
 - Driver installation
 - Start-up using joystick
 - Start-up via the PC (OWISoft)
 - Start-up via the PC (User's Application Software)

CONNECTING CONTROL UNIT:

Connect the control unit with the computer, as well as the joystick (optional accessories).

- 3) The connection to the computer can be made either by:
 - direct connection via RS232 or USB cable.
 - With the RS232 interface the communication is possible immediately.
 - For the USB interface a driver installation has to be done first.



Hardware start-up

PREPARING CONTROL:

Note:

- Plugs and cables must not be connected or disconnected while powered.

Before switching on and starting the control all peripheral devices have to be connected. Otherwise they will not be identified and initialized by the control unit.

A minimum distance of 15 cm to closed surfaces and walls must be maintained to avoid heat accumulation in the control or at the heat sink.

- 1) Connect the positioning unit(s) and any further linear measuring systems (optional accessories) to the preconfigured axes.

Note:

- The configuration for the axes can be seen in the acceptance certification.

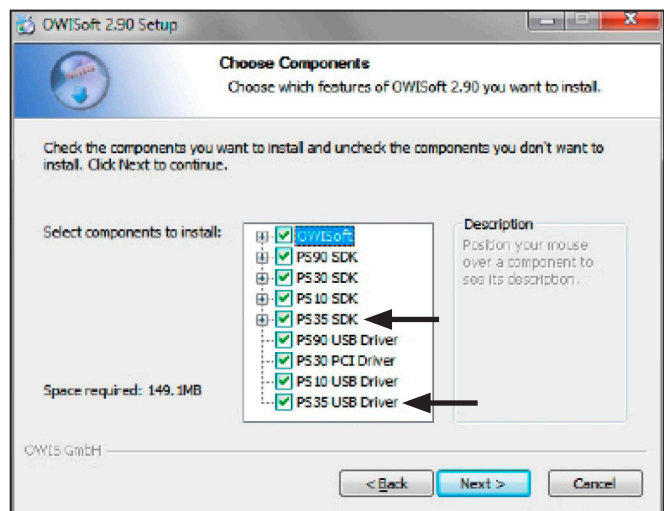


- 2) Connect the power supply to the control unit.



Software start-up (PC)

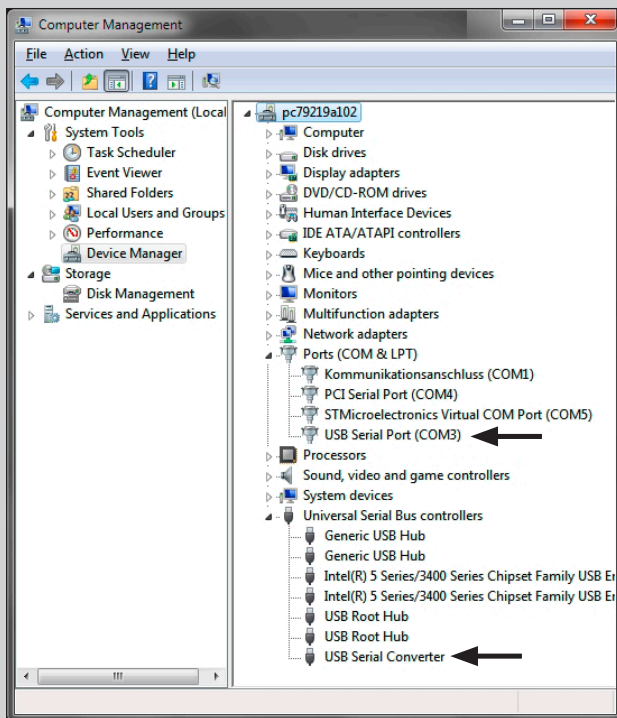
- 4) Start the computer, install software and drivers as follows.
Supported operating systems: Windows XP, Windows Vista (32/64 bit), Windows 7 (32/64 bit), Windows 8 (32/64 bit), Windows 8.1 (32/64 bit) and Windows 10 (32/64 bit).
During installation administrator authorisation is required.
 - For the installation please start "setup.exe".
 - Enter the necessary user data (username and company - any entry) and the password (delivered).



- Select the "PS35 SDK".
- Select the "PS35 USB Driver" during the installation.
All necessary files will be installed into the folder ("..\OWISoft\ps35\usb_driver"). Afterwards, the driver will be installed automatically.
- Restart the computer after installation.

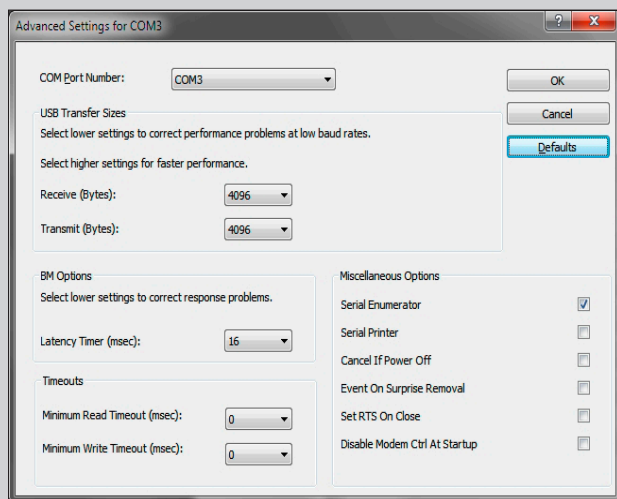
Optional: optimization of USB interface

- During the installation of the USB driver a virtual serial interface is created. It behaves like a normal serial interface (COM port).

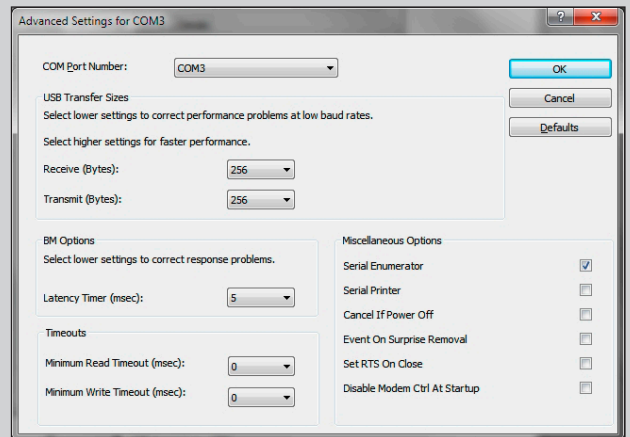


- The speed of communication depends on the interface configuration (USB interface). With the appropriate settings the throughput can be increased.
- Properties of USB serial port are shown in the device manager (tab "port settings", button "advanced ...").

Alternative for standard settings:



Alternative for "fast" configuration (new values for latency timer and transfer sizes):



- Further details for the the driver installation can be found at: `".\OWISoft\ps35\usb_driver"`.

Start-up using OWISoft

A short manual for the configuration via OWISoft has been included separately.

Start-up using user's application software

If the control shall be used by a user's own software, a precise knowledge of the control is essential.

Please read the manual for the control carefully.

There, you will also find a chapter "Instructions Concerning the Setup of User Application Software", as well as the command table for the PS 35.

